

Wycombe Wanderers F.C. Handbook



1971/72

Season

Price 10p



**AIM FOR "GOAL" AND WIN THE MATCH,
WITH "NATURAL GAS" YOU CAN
RELAX**

Visit our

EASTON STREET Showrooms

for all the latest

GAS APPLIANCES

We are open Monday to Saturday 9.00 a.m. to 5.30 p.m.

Early closing Wednesday 9.00 a.m. to 1.00 p.m.

GAS CENTRE

102 EASTON STREET

HIGH WYCOMBE. Tel H.W.26502

EROS HIRE TOOLS LTD.

SALES & SERVICE

TOOLS FOR HOME, GARDEN AND INDUSTRY

KANGO HAMMERS

CARTRIDGE GUNS

SPRAY UNITS

WELDERS

FLOOR SANDERS

CULTIVATORS

CHAINSAWS

VEHICLE TOOLS

etc.

CATALOGUE AVAILABLE ON REQUEST

153 Dashwood Avenue - High Wycombe 21330

The Printers and Publishers cannot be held responsible for any errors, omissions or changes after Publication

WYCOMBE WANDERERS FOOTBALL CLUB

Founded 1884

Members of the Football Association; Berks and Bucks F.A.;
Isthmian League and the Premier Mid-Week Floodlight League

Ground:

Loakes Park, High Wycombe. (Tel. No. High Wycombe 26567)

Colours:

Cambridge Blue Shirts; Oxford Blue Shorts,
Cambridge Blue Stockings
Alternative: Red Shirts, White Shorts

Trustees:

F. Adams; J. Adams, F.R.I.C.S., F.A.I.; J. Timberlake; J. Smethurst

Patron: F. Adams

Chairman: J. Smethurst

President: M. E. SEYMOUR, M.P.S.

Hon. Secretary: A. J. Crump (Tel. No. H.W. 27511)

Hon. Treasurer: R. N. Lee

Hon. Med. Officer: Dr. D. Ellis, M.B., B.S. (Lond.)

Committee:

C. Avery, G. Cox, J. Goldsworthy, R. Holt, P. Pearce, J. Rackstraw,
T. Thomas, H. Wharton, R. Williams.

Manager: B. R. LEE, J. P.

Asst. Manager: J. REARDON

Groundsman: J. SHEPPARD

Honours List

F.A. AMATEUR CUP

Winners 1930-31, Finalists 1956-57, Semi-finalists 1949-50, 1954-55

ISTHMIAN LEAGUE CHAMPIONS

(Senior) 1955-56, 1956-57, 1970-71. (Reserve) 1946-47, 1955-56,
1956-57, 1957-58, 1959-60

WYCOMBE FLOODLIGHT CUP

Winners 1966-67

A.F.A. CUP

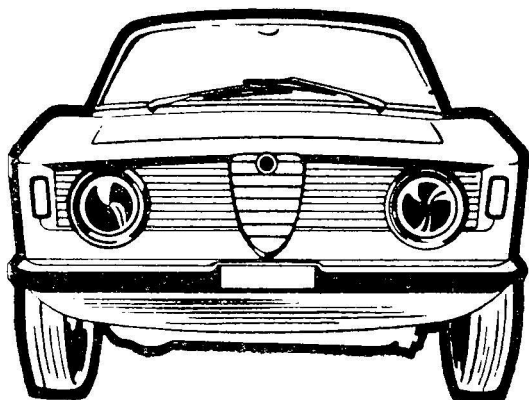
Winners 1966-67, 1967-68

PREMIER MID-WEEK FLOODLIGHT LEAGUE

Winners 1969-70, Runners-up 1970-71

BERKS AND BUCKS F.A.

Winners 1922-23, 1924-25, 1932-33, 1934-35, 1939-40, 1946-47, 1948-
49, 1949-50, 1953-54, 1957-58, 1959-60, 1963-64, 1967-68



RUSSELS OF NAPHILL

for your ALFA ROMEO in Buckinghamshire

Telephone : NAPHILL 3270

MOTOR INSURANCE

Phone Great Missenden 4553

for quote before renewing insurance
new insurers welcome—

you could even start with a discount

20% discount cars over 10 years (ex. pre 47)

10% discount cars over 6, up to 10 years

★ SPECIAL RATES ★

for

CIVIL SERVANTS - POST OFFICE STAFF - POLICE OFFICERS
BANK OFFICIALS - SCHOOL TEACHERS - NON-MEDICAL
HOSPITAL ADMIN. STAFF - LECTURERS - FIRE & AMBULANCE
SERVICE - CUSTOMS & EXCISE OFFICERS

E. ANDREWS & CO. (Bucks) LTD.

Capelcoed House, Wycombe Road, Prestwood, Bucks.

Great Missenden 4553 — 9 a.m. - 9 p.m.

Evening calls welcomed

From the Chairman

High Wycombe is singularly fortunate to have at its centre an excellent Sports Stadium. Loakes Park has housed, over the years, many hundreds of thousands of football enthusiasts and during the past few years, particularly, has become a centre for the family. We have the best supported amateur side in the country and in return the Club has the responsibility to provide entertainment through good football with facilities to match. This we are constantly trying to achieve.

During the past season we have had some nail-biting games and tension, on a number of occasions, was high. There is no excuse, if we have lost (and it is not often), or if there has been some bad refereeing, for a very small group of fans to behave stupidly. We all feel disappointed at losing or getting decisions with which we disagree, but these things have a habit of levelling themselves out at the end of the season.

No organisation can function without the full co-operation of all its members and this we have in abundance. From the "tea ladies," through the Supporters' Club, the playing staff, the Committee, the groundsman and our supporters, we all play a part in the creation of a great club. We are constantly aware of shortcomings and our efforts in this direction are always aimed at eradicating them for the benefit of everyone.

Having said that, we are all looking forward to the 1971/72 season and meeting our old friends but, more particularly, the newcomers to the League.

JACK SMETHURST (Chairman).

**BEST CASH PRICES IN BUCKS.
FOR NON-FERROUS and FERROUS
METALS
SMELTERS — SCRAP MERCHANTS
CAR BREAKERS**

SOUTH BUCKS DISPOSALS LTD.

**HIGH HEAVENS WOOD, CLAY LANE,
BOOKER, MARLOW, BUCKS.**

Telephone : HIGH WYCOMBE 29298

Evenings : HIGH WYCOMBE 24006

THE ROYAL BUCKS LAUNDRY

**OXFORD ROAD,
HIGH WYCOMBE,
BUCKS.**



HIGH WYCOMBE 21015

Secretary's Report

In presenting this contribution to the club's annual for season 1971-72, it is primarily my responsibility to record our achievements of the previous season. This will be remembered as the one in which we repeated our successes of 1955/56 and 1956/57 and brought the championship of the Isthmian League to Loakes Park for the third time. From the administrative point of view it must also be reckoned as one in which, as the Balance Sheet shows, almost everything went in our favour and it would be tempting providence to expect a repeat performance too often. With an average home gate of approximately 3,000, we must surely rate as the best supported amateur club in the country, and it behoves us to look to, and improve, our amenities, and so foster this enthusiasm.

Our performances in the three cup competitions were almost a repeat of the previous season, except that we progressed one round further in the F.A. Challenge Cup and reached the final of the Berks and Bucks Senior. Our progress in the F.A.C.C. was notable for the fact that we dismissed three Southern League clubs by pretty respectable scores, until meeting local rivals Slough Town in the first round proper, and losing after a replay. In the F.A. Amateur we were fortunate in receiving four home draws, and being strongly fancied to win the cup outright. But once again we failed at the quarter-final hurdle to the ultimate winners before a record crowd for the season. The Berks and Bucks Senior was responsible for two very good final games against Slough, the first a goal-less draw at Reading, and in the replay at Marlow a 1—0 victory for our opponents.

If all of the foregoing contains a measure of disappointment, it was particularly gratifying, after reaching within one point of the Isthmian League championship in season 1969-70, that we should succeed in the following one. If you remember we started our league programme in great style, and it was not until the fourteenth game that we suffered our first defeat. By the end of the year, however, from 22 games played nine points had been dropped, and it required some extra effort in the remaining games if we were to succeed. From then on by reason of an early dismissal from the Amateur Cup, our nearest rivals, Sutton Utd., were drawing ahead, and there was a considerable leeway to make up. It was at this point that the team really "clicked" and only three points were dropped in the next fifteen games. During this period some excellent games were witnessed at Enfield, Woking, Barking and Hendon, culminating in the decider at Sutton when we were successful by 1—0.

WEDDING and BIRTHDAY CAKE SPECIALISTS

ANY COLOUR — FRESH MADE BREAD AND
CONFECTIONERY — REGULAR DELIVERIES

D. BANHAM

Amersham Road, Hazlemere, High Wycombe, Bucks.

Telephone : HIGH WYCOMBE 30149

Self Drive Services

T **TRANSAUTO** **O**
LTD.

Tel. PENN 3001
BUCKINGHAMSHIRE

INTERNATIONAL
TRAVEL LTD.

AIR — SEA
RAIL — COACH

19 HIGH STREET, HIGH WYCOMBE

Telephone : 29201

In our second season in the Premier Mid-Week Floodlight League, we repeated our performance of the first by winning our section. In the semi-final play-off we drew 1—1 at Barking and won the replay 2—1 at home. The final against Walton and Hersham at Loakes Park failed to live up to expectations and we were defeated somewhat ironically by a penalty goal.

Our challenge match for the Wycombe Hospital Cup was played against Hillingdon Boro' on 22nd September, and as a result the matron's fund benefited by £100.

As holders of the Westminster Hospital Cup we were obliged to arrange a game for this hospital's benefit, and we chose the game against the Combined Services XI prior to their visit to Gibraltar.

Our selection was somewhat unfortunate from the point of view of attendance as we were obliged to replay the B. & B. cup final on the evening preceding. However, with the help of the Supporters' Club, we were able to augment the proceeds of the gate, to a donation of £100. For the record, our opponents were successful by 2—1.

Our season commenced on the 8th August with six newcomers to the club viz. Bernie Bremer, Paul Fuschillo, Les Hartridge, Ian Maclean, Ted Powell and Larry Pritchard. It is perhaps significant that we finished the season with the same eighteen players with which we started. Les Hartridge was unfortunate that in our first league match he contracted an injury which plagued him throughout the rest of the season. Paul Fuschillo after this one season decided to join Peter Suddaby as a professional with Blackpool F.C.

Ted Powell played for England on four occasions, as did Larry Pritchard and Paul Fuschillo on three, and John Delaney on two. This was also the season of the Great Britain Olympic XI and the above four players were prominent in most of the "trials" against professional clubs leading up to the games against Bulgaria at Wembley and Sofia in which Ted Powell played such a notable part. We were also well represented in the B. & B. XI, which was successful up to the semi-final of the Southern Counties Amateur Championship, with seven of our players taking part, viz. John Maskell, Ted Powell, John Delaney, Ian Maclean, Geoff. Anthony, Larry Pritchard, and John Hutchinson. Geoff. Anthony also played for Wales on two occasions, and has also been on the Middlesex Wanderers three-week tour of Japan. Barry Baker played for an F.A. XI in the Marlow centenary game.

FABRICATION



SPECIALISTS

Elf METALCRAFT LIMITED.

1 ALBERT STREET, HIGH WYCOMBE, BUCKS.

Tel: H.W 30398

J. B. SEARL & SONS

COAL & COKE MERCHANTS

SAUNDERTON HOUSE - SAUNDERTON

NAPHILL 3211

THE ANGEL

PAULS ROW, HIGH WYCOMBE.

Telephone : 20180

ROY AND EUNICE INVITE YOU TO LUNCH
INEXPENSIVE MEALS TO SUIT EVERYONE
AND VARIOUS SANDWICHES AND ROLLS
MADE TO ORDER

AMPLE CAR PARKING SPACE

As a result of our previous visit to Jersey, we were invited once again to take part in the Channel Islands F.A. centenary celebrations at Easter. This could hardly be termed a holiday, as three matches were played in four days. At the end of the season we visited Gibraltar where we played two matches during the seven-day stay.

It is fair to say that progress is being made with the Development Fund Scheme. In fact we were encouraged sufficiently to appoint during the season a full-time organiser, who took up his duties on March 1st this year. We think that we were fortunate in our choice of Mr. Frank Darby, and we look forward to his playing an important part in the affairs of the club.

Finally, our success as a club ultimately depends upon our playing ability, and in this respect we are fortunate in having as our team manager Brian Lee, and assistant manager John Reardon. Their efforts once again for the season can only be commended.

A. J. (BERT) CRUMP (Hon. Sec.).

FULLY LICENSED

LA MOLISANA

ITALIAN RESTAURANT

14 OXFORD STREET

HIGH WYCOMBE - BUCKS.

-
- ☆ SPECIAL LUNCHES MONDAY TO SATURDAY
 - ☆ Open Sundays 7 p.m. to 11.30 p.m.

TAKE PRIDE IN YOUR HOME

POTS, PANS, CHINA, UTENSILS
DOMESTIC HARDWARE

DO-IT-YOURSELF TOOLS
PAINT, WALLPAPER and SUNDRIES

LIDEN WHITEWOOD FURNITURE
GARDEN TOOLS, BULBS, PLANTS, SEEDS
and SUNDRIES

All obtainable at HAZLEMERE

HOMEPRIDE

**25-27 PARK PARADE, HAZLEMERE
HIGH WYCOMBE 21807**

T. & L. MOTORS

(Proprietor: TONY YOUNG)

**SKYLARK ROAD
TATLING END,
GERRARDS CROSS,
BUCKS.**

Tel:

Denham 3406 (Workshop)

Bourne End 22441 (Sales)

Supporters' Club Report

The season 1970/71 was a memorable one for all Blues supporters. For several seasons past the Wanderers had looked as if they might win the Amateur Cup or the Isthmian League Championship, or even both of these very-difficult-to-win competitions, but always at the end of the campaign they were a few points short, or somehow or other the cup had slipped their grasp. But this time it was different, the Blues won the Isthmian Championship, and had unquestionably proved themselves to be the most consistent team in the league over the 9 months the fiercest struggle in amateur football took place.

The Wycombe supporters saw some great football during this period, it was usually good attacking football, too. The Wanderers scored 93 goals in the league campaign, and for all matches in the 1970/71 season the goal tally was almost 200. Could there possibly be any supporter who was dissatisfied? If so, he surely must be hard to please.

During the 14 years that had passed since the club had last won a major competition, many hundreds of new supporters had made their way to Loakes Park, and for them it was their first experience of the thrills and tension that go with winning the championship. At Wycombe the supporters have been made to feel a part of a great club. The players, by voicing their appreciation of the support they get from the terraces, have conveyed to their supporters a feeling that they have materially helped towards the success of the team on the field. At the end of the season the players stood on the pitch and toasted their supporters in Champagne, a much-appreciated gesture that will remain in the memories of the supporters for many years to come.

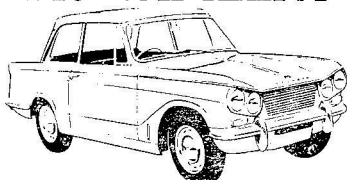
The Supporters' Club, of course, usually flourishes and prospers with the success of the team, and last year was no exception. There was a dramatic rise in the membership of the club. It was 50 per cent. up on the previous year. It had seemed there was an air of optimism at Loakes Park right from early August. On the first day of the season, before a single league point had been won, 245 supporters joined the club. By the end of the month the membership had risen to 626 and at the close of the season the total stood at 1,497. Certainly the highest figure for many years.

With such good crowds gathering at Loakes Park each match day all the Supporters' Club sales points showed a substantial increase in takings over the previous season. At times our voluntary

Telephone : BOURNE END 24550

NEW AND USED CARS

H. MALEM - CAR SALES



Part Exchange — H.P. Facilities

Insurance Arranged

"TOP OF THE QUALITY LEAGUE EVERY YEAR"
14 WYCOMBE LANE, WOOBURN GREEN, BUCKS.



THE HOME BREWER

19 DESBOROUGH AVENUE,
HIGH WYCOMBE,
BUCKINGHAMSHIRE.

Tel. : HIGH WYCOMBE 25538

CAR REPAIRS — CAR SALES & SERVICE

M.O.T. Testing Station

LONDON CO-OPERATIVE SOCIETY LTD.

TRANSPORT DEPARTMENT, BRIDGE STREET,

HIGH WYCOMBE - BUCKS.

Tel. 24452

staff was severely taxed, but they all stood up to the rush cheerfully and deserve the highest praise. Many new lines were introduced into the Club Shop, which is the newest venture in the Supporters' Club. For the first time ever, supporters could buy at Loakes Park, such items as Wycombe Wanderers' scarves, hats, pennants and hold-all bags. The response was enormous, and more innovations are planned to appear during this present season. Now our shop is attracting great attention from visiting Supporters' Clubs. Many write asking for guidance in setting up similar shops on their own grounds. Here, too, our staff can take credit for a job well done.

Many enjoyable evenings were spent in the Club Room by players and supporters together at the series of Saturday socials. Our club staffed the bar, and although it was hard work satisfying the thirsty dancers, the workers enjoyed the evenings as much as the members. This is what the Wycombe Wanderers' club spirit is all about.

By the time you are reading these words we shall be well into another season. We in the Supporters' Club are confident that again the team will have success on the pitch, and that they will get the most loyal and loud vocal encouragement from the terraces. Our willing band of workers will continue to do their best to make your visits to Loakes Park as enjoyable as possible, serving you with food, drink, smokes and many other items that we hope you will find of interest. You can help your own club by shopping at the Supporters' Club.

Remember our motto: WIN OR LOSE, SUPPORT THE BLUES.

RON. FISHER.

Make Your **GOAL**

THE BEECHTREE FILLING STATION

HOLMER GREEN

FOR PETROL AND OIL

SAVE

GREEN SHIELD STAMPS



Action in our Cup Tie with Wealdstone last season.

The Manager Reflects

The close season of any football club is always filled with optimism, basically to improve on what has gone and to maintain standards. As the end of the 1969-70 season had finished on a disappointing note, when the Championship of the Isthmian League was lost in the last match at Kingston, various thoughts crowded my mind.

The interesting and difficult target is striving to win and whilst there is a feeling of anti-climax when the target is reached, the real challenge is maintaining the standard. After a near miss in the previous season there could have been a decline, another near miss or a determination to improve. It was, therefore, a creditable effort by the players in succeeding where they had previously failed.

A manager's aim must be to provide a consistently winning team, which plays entertaining football within the spirit of the game. He must also gather around him a group of players who are ambitious to succeed at the game for at this level, the aim is to win. A group of players who complement each other on and off the field, this is the real challenge — to bring the best out of each player and all at the same time.

Players fall into different categories. There are big ones, noisy ones, quiet ones, skilful players, physical players, up and down players and consistent players. There are those who think about the game and those who are reactionary and instinctive players. There are those who work hard, those who 'ballwatch,' those who can lift themselves and others in the process and those who need leading in times of stress.

Such is the composition of a squad, and in trying to get the best out of players, they have to be thought of in three ways, as individuals, collectively as a 'team' and as a team within a 'team.' Together we share many hours, share elation and disappointment, but retain our original objective — to be successful as a team.

If you look at the Squad which won the Isthmian League Championship last year they were a group of colourful characters and were always a credit to High Wycombe. There was a vast amount of International experience, the thoughtful and the practical, but all were concerned with playing football and trying to win by playing football.

As a result of winning the Championship and retaining interest in knock-out competitions until the latter stages, the season was successful. The aim for the future must be to maintain and improve on this high standard, particularly for our supporters. That is the final challenge!

We know that our

MOTOR INSURANCE

rates are excellent . . .

but we do arrange all

classes of insurance too . . .

why not give us a ring

S. G. BUSBY

Associated Insurance Brokers

Bridge Street

High Wycombe

Buckinghamshire

High Wycombe

25770 20558 4298

“Your Guard for the Future”

By being successful though, we have created problems for ourselves, among which is the degree of 'expectancy' from our supporters. It is they who are demanding and keep up the pressures. It is easy to be derisive but by what standard are you judging? I would have thought that Loakes Park Supporters judge things in a far more critical vein than any other club in Amateur football.

We have the biggest and most loyal band of supporters in amateur Soccer and we are all very proud to belong to such a club. It may be argued that as people pay their money they are entitled to air their views, but at Wycombe they are also appreciative of the opposition's efforts. This is why every player likes to visit Loakes Park and to sample the exciting atmosphere of competitive sport.

The price of success, however, can be damaging and in some instances almost irretrievable, but the essential factor is to be aware of the demands. In all walks of life, success is often tinged with disappointment.

Let us hope that winning the premier Amateur League Championship in the country is the start of things to come, but it may take longer than you think . . . I hope you stay the course!

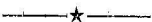
WITCHER BROS. LTD.

CAR HIRE SERVICE

CARS AVAILABLE FOR WEDDINGS, TOURS, ETC. — ALSO AT THE RAILWAY STATION



ANY MAKE OF CAR SUPPLIED — M.O.T. Vehicle Testing Station
REPAIRS, SERVICING, WHEEL BALANCING, ETC.
CARS GARAGED AND STORED



STATION GARAGE, PRINCES RISBOROUGH, BUCKS.

Telephone : Princes Risborough 4239



"Johnny Hutchinson on the ball against Walthamston Avenue this season."

From Our Sports Editor

MIKE WHITESMAN

(Bucks Free Press)

What was your reaction when Wycombe Wanderers bewildered Kettering with five goals in 25 minutes during last season's F.A. Cup clash?

My editor — you could say he shows more than a passing interest in the Blues' fortunes — wore the broadest smile of his life and carried it around like a battle trophy for days afterwards.

Alan Goldsmith, up in the Wycombe Hospital Broadcasting box, almost swallowed the microphone and virtually deafened the hapless engineer recording the sound level at the other end of the line. Alan still has to gargle twice a day to help his voice readjust to the outside world.

Roy Holliday, Wycombe's pioneer commentator, is to this minute cursing Dame Luck that his opening stint for the match ended just as the fun was beginning.

The entire Loakes Park crowd went into a delirious frenzy, and of course there was our somewhat excited friend in the crowd who turned in the quote of the day, making the air bluer than Wycombe shirts with his magical retort — “*?-.!!/* fantastic.”

All this time I'm supposed to sit primly in the Press 'box,' viewing the scene with an unbiased, clinical eye while my spectacles cloud over with mist worse than a London pea-soup fog.

In fact, I'm trying hard to show no outward sign of emotion which might embarrass the visiting pressmen from Kettering, sitting on my right and analysing just why John Delaney should never have been given the opening for the goal of the season.

Imagine also my red face when outleaping even Brian Lee after Johnny Hutchinson had sent in the “clincher” from a range of 35 yards in that most memorable of spectacles against Hendon at Claremont Road.

I'll never forget the grin of understanding on the face of Hendon's experienced Pressman. He knew only too well how I felt, having seen the past triumphs of the Claremont Road club during his 22 years on the Isthmian League “circuit” — neutral, but none the less delighted. I suppose it's inevitable to be carried away when you're so involved with a club. Mind you, by the time it comes to writing my reports, neutrality is again uppermost in my thoughts (he adds hastily).

Telephone : 34943

General Tool Hire

TOOLS FOR ALL TRADES — DOMESTIC
COMMERCIAL — INDUSTRIAL

14 EASTON STREET, HIGH WYCOMBE, BUCKS.

HUGHENDEN MOTORS LTD.,

HUGHENDEN VALLEY, HIGH WYCOMBE
BUCKS. :: Telephone Naphill 2662

for

Top Quality Repairs & Servicing - Body Repairs

NEW & USED CAR SALES

Telephone : HIGH WYCOMBE 31734

L. CHEESE

**ANTIQUE, COMMERCIAL
UPHOLSTERY REPAIRS**

8 CHAIRBOROUGH ROAD,
HIGH WYCOMBE, BUCKS.

A League programme is like an annual "round" to meet old friends and talk about past, present and future. It is no different for reporters. From top table to bottom, Sutton, Enfield, Tooting, Dulwich, Hitchin, St. Albans — you name the club and I'll fit a Press card to it.

You could call it a kind of club. We swap experiences, try to analyse "our" teams from each other and generally chat to broaden our background to the match as much as possible. The subject does stray occasionally to other topics, of course. After all, we're only human — honestly. Blood group O and all that.

I guess I'm pretty lucky chronicling the Wanderers' progress. Several reporters from elsewhere have told me of their envy for a man covering a "winning team." But Wycombe last season were more than just that. Few, if any, amateur teams played such stylish, clever, skilful and — yes, downright clean — football, all at the same time.

Brian's boys have the title to prove it. But they, and everyone, including myself, involved in any way with Wycombe, also have many, many memories. And for that above all I personally thank the Blues — players, officials, supporters, and whoever else is in line.

Let's face it. If I didn't get through the Loakes Park gates free of charge, I certainly would have had my money's worth last season.

LUNN

POLY

HOLIDAYS and TRAVEL

**MEMBER OF THE
TRAVEL TRUST**



**9 OXFORD STREET,
HIGH WYCOMBE, BUCKS.**

Telephone : 0494 34621/22



*"John Delaney heads clear during the match with Walton and Hersham
this season."*

RANDOM THOUGHTS

It is said that Johnny Hutchinson doesn't like girls.

Is Ian Rundle made like other people or was he manufactured at Pressed Steel?

Does Larry Pritchard buy his shoes in the men's department?

What does John Maskell talk about to the Ref?

Which two are referred to as the "Young Buccaneers"? More in our next instalment.

'Tis said that when Jock Shepherd runs across the field, the soles of his boots can be seen so often, it looks as if he is knelt in prayer.

Vince Faulkner does not have his boots made at Cammell Laird.

Paul says "You can take what view you like, I have my own."

Is John Delaney depressed when the forwards score more goals than he does?

Does the club need to keep records when they have Tony Horseman to refer to?

Did Ted Powell really flipping-well swear at the ref. at Hitchin last season?

Why does Trevor Waughman insist on throwing it in?

John Maskell says, "Speaking of goalkeepers, we've got to take Ede."

Is the beard sometimes worn by Keith Searle a real one?

When players bounce off Rob Williams, does he apologise?

Kevin O'Brien says that every time he meets Rob Williams they both wear a glazed look.

It is said that Terry Cooper of Leeds models himself on Chris Austin.

The above thoughts are intended only for those of the players who can read.

THE REF. MAY WISH HE WAS DEAF

(at football matches for instance)

But if you are deaf you will know only too well the distress and embarrassment that this unfortunate disability can cause.

Bernatone, one of the world's leading manufacturers of hearing aids (made here in our modern factory in High Wycombe) have helped thousands of sufferers through their unique hearing aid Rental Plan service, which provides all these benefits at a cost everybody can afford.

- ☐ **TINY MODERN AIDS**
- ☐ **FREE BATTERIES** (sent regularly)
- ☐ **NO REPAIR BILLS**
- ☐ **NO POSTAGE**
- ☐ **FREE REPLACEMENT AID** (when required)

All these aids and services are available not only all over the world, but also, because we are a High Wycombe firm, here at our permanent Bernatone Hearing Aid Centre. A trained audiologist is always on hand to help and advise you.

Free Hearing Tests at Home by appointment without obligation

**YOU TOO COULD REDISCOVER THE PRECIOUS JOY OF
HEARING AT**

B E R N A T O N E **H E A R I N G A I D C E N T R E**

3 HIGH STREET, HIGH WYCOMBE. Tel. : 30130

The Blues — Pen Pictures

1. **C. AUSTIN** — Defender

Chris, in his first season, has quickly adjusted himself to Isthmian League Football. Until of late Chris was a regular full-back with Witney Town — the Hellenic League side. He has also played for Oxford United as an amateur and frequently represented the Oxfordshire Football Association. Married and living in Oxford, Chris is 24 years of age, 5ft. 10in. tall and weighs 10-10. A Telephone Engineer by trade.

2. **P. BIRDSEYE** — Defender

A newcomer to Loakes Park but has already made his mark with the Blues. Last season Paul represented the British Physical Education Colleges, Universities Athletic Union, Worc. F.A. and Loughborough College, where he was studying Physical Education. As you would expect, Paul has a keen interest in all sports. Aged 21, 5ft. 11in. tall, weighs 12-0.

3. **J. DELANEY** — Defender (CAPTAIN)

On joining us from Slough 3 seasons ago, John was made Skipper. He has a dominant personality which is reflected on the pitch. It also tends to help other players, particularly in crucial matches. John has a vast amount of football experience at all levels. He has represented Great Britain, capped 9 times and regularly skips the Berks and Bucks side. John is married and lives in Slough with a daughter of 8 years and a son of 6. He is employed in the Furniture Trade. Aged 28, 6ft. 2in. tall, weighs 12-11.

4. **V. FAULKNER** — Defender

Vince is now in his 9th season with the Wanderers. A local boy, joining us from youth football, he has played in nearly all positions for us during this time. Vince has been selected both for the F.A. and Berks and Bucks. Employed by a local garage as a Car Finisher, he is married with a 2-year-old daughter. 24 years of age, 6ft. 2in. tall, weighs 13-0.

5. **J. HUTCHINSON** — Forward-midfield

John is now in his 3rd season with the Blues. He joined us from ex-Isthmians Wealdstone, for whom he played as an orthodox winger. This season, playing midfield, he has been more impressive, so much so that he was recently selected for an F.A. XI. Although a comparative youngster, John has represented Middlesex F.A. and Berks and Bucks on many occasions. Living in Wealdstone with his parents, he is an Electrician by trade. Aged 22, 5ft. 8in. tall, weighing 11-2.

Buckinghamshire and the Chilterns

HAMNETT RAFFETY

G. L. E. Eyles, F.R.I.C.S.

R. A. Raffety, F.R.I.C.S.

G. L. Kendall, F.R.I.C.S.

A. J. Cozens, F.R.I.C.S.

R. T. H. Heeley, F.R.I.C.S.

J. R. Holland, B.A., B.Sc., A.R.I.C.S.

J. N. Rabson, F.R.I.C.S.

S. C. E. Inchbald, A.R.I.C.S.

Chartered Surveyors, Chartered Auctioneers
& Estate Agents
Town Planning Consultants, Valuers
Farm and Agricultural Valuers

AYLESBURY

Tel. 4633

AMERSHAM

Tel. 5636

Head Office :

HIGH WYCOMBE

Tel. 21234 (10 lines)

PRINCES RISBOROUGH

Tel. 4422

BEACONSFIELD

Tel. 5432

FARNHAM COMMON

Nr. Slough Tel. 2436

6. A. HORSEMAN — Forward

Tony was born in High Wycombe and the Wanderers has been his only club. He has been the leading Isthmian League goal-scorer on no less than four occasions. Although in the twilight of his career, the knack of getting goals has not deserted him. His league goals in our Championship last season speaks for itself. Tony has represented Great Britain, South v. North, Isthmian League, F.A. XIs and Berks and Bucks. Married with three children, he lives in Wycombe, where he is a Furniture Machinist. 30 years of age, 5ft. 8in. tall, weighing 10-0.

7. M. HOLIFIELD — Forward

Although another newcomer to the squad, Mick joined us from Oxford City in the close season. He has represented the County Association and played in F.A. selected XIs. Mick is a student at the Oxford Polytechnic and lives in Wheatley with his parents. Aged 23, 5ft. 9in. tall, weighs 11-0.

8. B. MARCHAM — Forward

Bob started his football career with our near neighbours Marlow. On leaving them he joined Oxford City, with whom he had a regular place. Now, with a full season of Isthmian League football behind him, he is a member of the "Blues" squad. Employed with a local Printing Company, he lives in Marlow. Aged 20, a bachelor, Bob is 5ft. 8in. tall, weighs 11-7.

9. J. MASKELL — Goalkeeper

John has, for a long time, been recognised as one of the Isthmian League top keepers. He is in his 8th season with us, since joining from Oxford City. Only a full cap has eluded him, having represented South v. North, Isthmian League F.A. XIs and Berks and Bucks. John is employed by British Leyland at Cowley, married with two children, he is 28 years of age, 6ft. 1in. tall, weighing 13-8.

10. K. O'BRIEN — Goalkeeper

Kevin is now in his 3rd season with the Blues. He also keeps wicket for Wycombe at cricket — an unusual combination! Kevin joined us from Chesham United and previously was in a fairly successful Hemel Hempstead side, being with them when they won promotion. He has also represented Berks and Bucks on many occasions. Married with two sons, he is a Company Representative and lives in Weston Turville, near Aylesbury. Aged 30, 6ft. tall, weighs 12-0.

DOWNLEY GARAGES LTD.

**Now you can wash
your car anytime...**

**Our automatic car wash is now
fully floodlit and open from
7.30 a.m. - 10.30 p.m.**

This must be the best value around,
WASH, WAX and DRY in just FIVE
MINUTES for only 30p.

Contract rates available

WE NOW HAVE

TOYOTA 1600 and 1200 S.L.

DEMONSTRATION MODELS AVAILABLE

Why not book a trial run in one of these superb motor cars

DOWNLEY HIGH WYCOMBE

TELEPHONE : H.W. 23628



11. I. RUNDLE — Defender

Another long-serving player, Ian is in his 7th season at Wycombe. Perhaps lacking in some of the finer skills, Ian more than makes up for it by being a true competitor. His previous club was Oxford City, where he now lives and works as a Department Supervisor. Married with two sons, Ian is 27 years of age, 6ft. tall, weighing 11-8.

12. E. POWELL — Defender-midfield

Ted, probably one of the country's most experienced Amateur players, is now in his 2nd season with us after a distinguished period at Sutton United. He has had all the football honours with the exception of a Cup Winner's Medal. For the record he has represented Great Britain on no less than 8 occasions and can claim 27 full caps, plus all the usual county honours. Ted is a Teacher at Manor High School, Sutton. A bachelor living in Ewell, he is 30 years of age, 5ft. 9in. tall, weighing 11-0.

13. L. PRITCHARD — Forward

Larry who joined us from Sutton United with Ted, is another very experienced player and undoubtedly played a very big part in our Championship last season. A player who sets his own standards very high and one who is equally self-critical. Larry has 6 times represented Great Britain and been capped on no less than 27 occasions. Whenever possible he likes to play golf as a relaxation from football. Recently married he now lives at Worcester Park in Surrey. A Telephone Engineer by trade he is 26 years of age, 5ft. 8in. tall, weighs 10-4.

14. R. WILLIAMS — Midfield

Rob, in his first season with us, has made a big impact at Loakes Park. Along with our usual quota of ball players, Rob has helped to make us a more balanced side. Having an international for a brother (Andy Williams of Enfield) there is no doubt a fair amount of rivalry in the family! Rob's previous club was Wealdstone, where he was made Captain. Also a very good cricketer, Rob plays for Lloyds Bank, with whom he is employed. Married for 3 years, he now lives at Heston, Middlesex. Aged 24 years, 5ft. 11in. tall, weighs 12-6.

15. T. WAUGHMAN — Forward

Trevor joined us from Sutton in the close season. Prior to this he played for Woking — his home town. His form at Sutton last season earned him a place in the Great Britain Training Squad. Trevor enjoys both Cricket and Tennis. Employed as an Office Clerk in nearby Woking, he lives with his parents. A bachelor, aged 22 years, 5ft. 10in. tall, weighing 11-8.

**Enjoy a Good Meal
in Comfortable Surroundings**

at

**THE FORGE
RESTAURANT**

**4 EASTON STREET
HIGH WYCOMBE
BUCKS.**

16. K. SEARLE — Forward

Keith, apart from a short spell with Hayes at the start of this season, has been a regular at Loakes Park. During his time with us he has, along with Tony Horseman, scored the majority of our goals. Having played for Barnet in the Southern League and Wealdstone in the Isthmian League, he is not without a fair amount of experience. Whilst at these clubs, Keith had representative honours with Middlesex F.A., Isthmian League and London F.A. Employed as a Maintenance Engineer by Kodak Limited and married with an 18-month-old baby daughter, he lives in Pinner, Middlesex. Aged 24, 6ft. tall, weighs 11-6.

**Give your car
a face lift...**



We are specialists in :

PANEL BEATING

SPRAYING & BODY REPAIRING

COMPLETE GARAGE SERVICE

CRYPTON ENGINE TUNING

RANDALLS GARAGE

Walters Ash, High Wycombe, Bucks.

Phone: NAPHILL 2205



"Micky Holifield scores the second goal against Walton and Hersham this season."



Resulting crowd scene

**OUR RECORD IN THE F.A. CHALLENGE CUP
AND THE F.A. AMATEUR CUP 1960-61 TO 1970-71**
(Abbreviations: Q.R. Qualifying Round. R.P. Round Proper
(R) Replay)

1960-61 F.A. CHALLENGE CUP

4th Q.R.	v. TOOTING & MITCHAM UTD	(home) won 2-1
	S. Bressington, P. Bates	
1st R.P.	v. KETTERING TOWN	(home) lost 2-1
	D. Thomas	Attendance 7,300

1960-61 F.A. AMATEUR CUP

1st R.P.	v. WIMBLEDON	(home) lost 1-2
	T. Holmes	Attendance 5,000

1961-62 F.A. CHALLENGE CUP

4th Q.R.	v. TILBURY	(home) won 3-1
	G. Blair, L. Worley, J. Beck (pen.)	
1st R.P.	v. ASHFORD TOWN	(home) draw 0-0
		Attendance 5,500
1st R.P. (R)	v. ASHFORD TOWN	(away) lost 0-3
		Attendance 3,223

1961-62 F.A. AMATEUR CUP

1st R.P.	v. ERITH & BELVEDERE	(home) won 2-1
	T. Holmes, P. Bates	Attendance 4,003
2nd R.P.	v. SUTTON UNITED	(away) won 4-1
	P. James, L. Worley, P. Bates 2 (1 pen.)	
3rd R.P.	v. WIMBLEDON	(away) lost 0-1
		Attendance 9,254

1962-63 F.A. CHALLENGE CUP

4th Q.R.	v. WALTHAMSTOW AVENUE	(away) draw 1-1
	J. Hay	Attendance 1,883
4th Q.R. (R)	v. WALTHAMSTOW AVENUE	(home) won 3-1
	R. Cross, L. Worley, J. Beck	
1st R.P.	v. MAIDENHEAD UNITED	(away) won 3-0
	A. Horseman 2, J. Hay	Attendance 5,337
2nd R.P.	v. GRAVESEND & NORTHFLEET	(away) lost 1-3
	D. Thomas (pen.)	Attendance 6,809

1962-63 F.A. AMATEUR CUP

1st R.P.	v. UXBRIDGE	(home) won 2-0
	D. Thomas, A. Charmon	Attendance 4,000
2nd R.P.	v. BARKING	(home) won 3-2
	J. Fisher, L. Worley 2	Attendance 2,008
3rd R.P.	v. HITCHIN TOWN	(away) lost 2-3
	A. Horseman, R. Jackson	Attendance 4,282

DINNER & DANCING AT



THE FERRY

Cookham Bridge. Telephone Bourne End 20017

Patron : C. LOPEZ YOUNGER

Luncheon 12 noon to 3 p.m. Dinner 7 to 11.30 p.m.

Dinner and Dancing every Friday and Saturday

A Buckingham Restaurant

CAN YOU STOP ?

IF YOUR BRAKES ARE FAULTY LET US PUT THEM RIGHT. WE HAVE
PADS AND LININGS TO FIT ANY CAR.

IF YOUR TYRES ARE WORN, TRY US FOR SIZE. Tel. 86784 or 82888.

IF YOUR WHEELS REQUIRE TRACKING OR BALANCING, WE CAN
DO IT.

IF YOU WANT BRAKE PIPES, HYDRAULIC, PETROL, DIESEL INJECTION
OR STEEL PIPES FOR ANY MAKE OF CAR, LORRY, TRUCK,
TRACTOR, **ENGLISH** OR **METRIC SIZES**, WE CAN MANUFACTURE
THEM TO YOUR PATTERN IN OUR FACTORY (WHILE YOU WAIT).

TRADE SUPPLIED

ALL YOU NEED IN ONE STOP AT
KENPRO (MOTORS) LTD.

ETHORPE WORKS, 26 OAKEND WAY, GERRADS CROSS

1963-64 F.A. CHALLENGE CUP

4th Q.R. v. BARNET (away) lost 3-6
L. Worley 2, D. Bassett Attendance 3,500

1963-64 F.A. AMATEUR CUP

1st R.P. v. DULWICH HAMLET (home) won 3-0
J. Balson 2, P. Lowen Attendance 3,300
2nd R.P. v. WHITLEY BAY (home) won 4-2
P. Lowen 2, A. Horseman, Attendance 6,636
L. Worley
3rd R.P. v. SPENNYMOOR UNITED (home) draw 2-2
P. Roystone (pen.), P. Lowen Attendance 7,394
3rd R.P. v. SPENNYMOOR UNITED (away) lost 1-2
P. Lowen Attendance 4,900

1964-65 F.A. CHALLENGE CUP

4th Q.R. v. HAYES (away) lost 0-7
J. Maskell fractured ankle after 10 minutes

1964-65 F.A. AMATEUR CUP

1st R.P. v. LEYTONSTONE (away) draw 2-2
L. Worley, K. Samuels Attendance 1,241
1st R.P. (R) v. LEYTONSTONE (home) lost 0-2
Attendance 3,436

1965-66 F.A. CHALLENGE CUP

4th Q.R. v. METROPOLITAN POLICE (away) won 3-2
A. Horseman 2, K. Samuels Attendance 1,334
1st R.P. v. GUILDFORD CITY (away) draw 2-2
L. Worley, K. Samuels Attendance 5,000
1st R.P. (R) v. GUILDFORD CITY (home) lost 0-1
Attendance 6,811

1965-66 F.A. AMATEUR CUP

1st R.P. v. AVELEY (home) won 2-1
A. Horseman, P. Bates Attendance 3,600
2nd R.P. v. PENRITH (home) won 1-0
P. Roystone Attendance 5,100
3rd R.P. v. ST. ALBANS CITY (home) draw 1-1
A. Horseman Attendance 5,964
3rd R.P. v. ST. ALBANS CITY (away) won 3-0
L. Merrick, A. Horseman, Attendance 5,088
K. Samuels
4th R.P. v. HENDON (away) lost 1-2
A. Horseman Attendance 5,489

THE PEGASUS INN

FREE HOUSE — MARLOW BOTTOM

ALL NATIONAL BEERS SOLD

WE MAY BE HARD TO FIND, BUT WE FEEL SURE YOU WILL
BE GLAD YOU DID WHEN YOU ENJOY A DRINK
IN THE FRIENDLY ATMOSPHERE AT ONE OF THE LONGEST
BARS IN BUCKINGHAMSHIRE.

WINE AND DINE IN OUR INTIMATE RESTAURANT

Open Every Day

BUSINESSMAN'S LUNCH DAILY — FULL A LA CARTE MENU

EXTENSIVE WINE LIST — REASONABLE PRICES

DRINKS SERVED UNTIL MIDNIGHT

TRY OUR ROAST LUNCHES ON SUNDAYS

**AVAILABLE FOR WEDDINGS AND NOW UNDER THE
PERSONAL SUPERVISION OF THE PROPRIETOR**

For Table Reservations Ring MARLOW 4926

WYCOMBE SILENCER CO.

EXHAUST SYSTEMS UP TO 30% OFF

CLUTCH COMPONENTS — 25% OFF

BRAKE SHOES & PADS — 25% OFF

WATER PUMPS & SHOCK ABSORBERS

FREE DELIVERY THROUGHOUT SOUTH BUCKS.

Ring 8 a.m. to 7 p.m.

PENN. 2052

1966-67 F.A. CHALLENGE CUP

4th Q.R.	v. CHESHUNT	(home) won 8-0 Attendance 3,187
	A. Horseman 4, P. Bates 2, K. Samuels, B. French	
1st R.P.	v. BEDFORD TOWN	(home) draw 1-1 Attendance 7,488
	K. Samuels	
1st R.P. (R)	v. BEDFORD TOWN	(away) draw 3-3 Attendance 7,641
	P. Bates, A. Horesman, L. Merrick	
1st R.P. (R)	v. BEDFORD TOWN	(home) draw 1-1 Attendance 8,821
	K. Samuels	
1st R.P. (R)	v. BEDFORD TOWN	(away) lost 2-3 Attendance 8,105
	A. Horseman 2	

1966-67 F.A. AMATEUR CUP

1st R.P.	v. LEYTONSTONE	(away) lost 2-4 Attendance 2,455
	J. Beck, A. Horseman (pen.)	

1967-68 F.A. CHALLENGE CUP

4th Q.R.	v. DAGENHAM	(home) lost 0-2 Attendance 2,000
----------	-------------	-------------------------------------

1967-68 F.A. AMATEUR CUP

1st R.P.	v. NORWICH OLD BOYS	(away) lost 0-1
----------	---------------------	-----------------

1968-69 F.A. CHALLENGE CUP

1st Q.R.	v. ST. ALBANS CITY	(home) draw 0-0
1st Q.R. (R)	v. ST. ALBANS CITY	(away) lost 0-1

1968-69 F.A. AMATEUR CUP

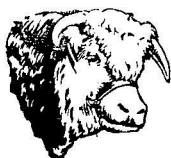
1st R.P.	v. OXFORD CITY	(away) lost 2-3
----------	----------------	-----------------

1969-70 F.A. CHALLENGE CUP

1st Q.R.	v. DULWICH HAMLET	(home) won 2-1
2nd Q.R.	v. ERITH & BELVEDERE	(home) won 2-0
3rd Q.R.	v. HITCHIN TOWN	(home) won 1-0
4th Q.R.	v. BARNET	(home) draw 0-0
4th Q.R. (R)	v. BARNET	(away) lost 0-3

1969-70 F.A. AMATEUR CUP

4th Q.R.	v. HERTFORD TOWN	(home) won 5-1
1st R.P.	v. CROYDON AMATEURS	(away) won 1-0
2nd R.P.	v. TOOTING & MITCHAM UTD.	(home) draw 0-0
2nd R.P. (R)	v. TOOTING & MITCHAM UTD.	(away) won 2-1
3rd R.P.	v. WEALDSTONE	(away) won 1-0
4th R.P.	v. ST. ALBANS CITY	(home) lost 0-2 Attendance 2,800



**162 MICKLEFIELD ROAD,
HIGH WYCOMBE.**

Telephone : 22396

ROGER HILL

Prop. : JOHN OLIVER

**COOKED MEATS AND SAUSAGES
HIGH - CLASS FAMILY BUTCHER**

VEHICLE DISPOSAL CENTRE

OFFICIAL COUNCIL CONTRACTORS

**ALL TYPES OF CARS, VANS AND LORRIES, ETC. DISPOSED
OF FOR YOU — WE CALL AND COLLECT
SITES CLEARED OF ABANDONED VEHICLES**

CONTACT US AT :

**HIGH HEAVEN WOOD, BOOKER,
HIGH WYCOMBE, BUCKS.**

Telephone : HIGH WYCOMBE 32731

**NEW AND USED
CARS SUPPLIED**



**Repairs and Overhauls
Car Hire Service
Tyres and Accessories**

CRYERS HILL GARAGE

Proprietors : T. A. & J. COLEBOURNE

CRYERS HILL, HIGH WYCOMBE, BUCKS.

Telephone : HOLMER GREEN 3291

1970-71 F.A. CHALLENGE CUP

1st Q.R.	v. WOLVERTON TOWN	(home) won 8-1
	J. Hutchinson 3, B. Baker,	Attendance 2,304
	A. Horseman, K. Searle, L. Pritchard 1 o.g.	
2nd Q.R.	v. BANBURY UNITED	(away) won 3-0
	B. Bremer, K. Searle, L. Pritchard	
3rd Q.R.	v. DUNSTABLE TOWN	(away) won 4-0
	J. Hutchinson, K. Searle, J. Delaney (pen.)	
	L. Pritchard	
4th Q.R.	v. KETTERING TOWN	(home) won 5-0
	J. Delaney 2 (1 pen.),	Attendance 4,518
	A. Horseman 2, K. Searle	
1st R.P.	v. SLOUGH TOWN	(home) draw 1-1
	A. Horseman	Attendance 6,662
1st R.P. (R)	v. SLOUGH TOWN	(away) lost 0-1
		Attendance 6,000

1970-71 F.A. AMATEUR CUP

1st R.P.	v. WEALDSTONE	(home) won 1-0
	L. Pritchard	Attendance 4,245
2nd R.P.	v. ENFIELD	(home) won 2-1
	J. Delaney 2	Attendance 6,144
3rd R.P.	v. OLDBURY UNITED	(home) won 4-0
	K. Searle, L. Pritchard,	Attendance 7,066
	B. Bremer, A. Horseman	
4th R.P.	v. SKELMERSDALE UNITED	(home) lost 0-3
		Attendance 10,203

***Please support the Advertisers
in this Handbook and
give them your patronage
whenever possible***

Wycombe Wanderers "Dolly Girls" with their Sgt. Major Frank Darby



Frank Darby, Vivien Bartlett, Janet Smith, Sue Andrews, Lindsey Blow, Lesley Ryder, Sheila Kerrigan, Clare Stratford, Vivien Oxlade.

Results 1970/71

Date	Opponents	Competition		Result	
8. 8.70	Bath City	Friendly	H	4	1
11. 8.70	Cheltenham Town	Friendly	H	6	1
15. 8.70	Walthamstow Avenue	I.L.	H	3	2
18. 8.70	Wealdstone	I.L.	A	6	1
22. 8.70	Maidstone	I.L.	A	4	1
25. 8.70	Corinthian Casuals	I.L.	H	3	0
29. 8.70	Sutton United	I.L.	H	4	0
31. 8.70	Hitchin Town	I.L.	A	2	1
5. 9.70	Clapton	I.L.	A	1	0
8. 9.70	Enfield	I.L.	H	1	0
12. 9.70	Bromley	I.L.	A	4	0
15. 9.70	Tooting & Mitcham	I.L.	A	0	0
19. 9.70	Wolverton Town	F.A.C.C.	H	8	1
22. 9.70	Hillingdon Borough	Hosp. Cup	H	4	0
26. 9.70	Leytonstone	I.L.	H	3	1
28. 9.70	Wealdstone	I.L.	H	2	1
3.10.70	Walthamstow Avenue	I.L.	A	1	1
6.10.70	Kingstonian	I.L.	A	1	2
10.10.70	Banbury United	F.A.C.C.	A	3	0
13.10.70	Oxford University	Friendly	H	3	1
17.10.70	Dulwich Hamlet	I.L.	H	1	0
19.10.70	Marlow	P.M.F.L.	H	2	1
24.10.70	Dunstable	F.A.C.C.	A	4	0
27.10.70	St. Albans	I.L.	H	3	2
31.10.70	Barking	I.L.	H	1	2
3.11.70	Hemel Hempstead	P.M.F.L.	H	6	1
7.11.70	Kettering Town	F.A.C.C.	H	5	0
10.11.70	Maidenhead United	P.M.F.L.	A	2	0
14.11.70	Leytonstone	I.L.	A	2	2
17.11.70	Chesham United	P.M.F.L.	H	5	1
21.11.70	Slough Town	F.A.C.C.	H	1	1
25.11.70	Slough Town	F.A.C.C.	A	0	1
28.11.70	Kingstonian	I.L.	H	4	0
1.12.70	St. Albans	I.L.	A	0	2
3.12.70	Oxford City	P.M.F.L.	H	9	0
12.12.70	Maidstone	I.L.	H	5	0
19.12.70	Ilford	I.L.	A	2	0
22.12.70	Wealdstone	P.M.F.L.	A	0	1

AUTO BITS

Motor Car Accessories at Discount Prices

PARKING SPACE AVAILABLE

Open Sundays 10 a.m. - 12.30 p.m.

and Daily 9 a.m. - 6 p.m.

75 WEST WYCOMBE ROAD, HIGH WYCOMBE

Telephone 28781

**OUR GOAL IS TO INSURE YOU WE SCORE WITH
COMPETITIVE RATES**

PETER FRY (INSURANCE) LIMITED

**SPECIAL MOTOR RATES FOR R.A.C. MEMBERS
THROUGH LLOYDS**

**23 AMERSHAM HILL,
HIGH WYCOMBE, BUCKS.**

Telephone : 30084 and 20187

JIM and JEAN PLEASE welcome you to



**THE
OLD
SUN**

**Lane End,
Nr. High
Wycombe,
Bucks.**

Tel.: Lane End 235

A Whitbread Wethered House

SANDWICHES, SNACKS — CAR PARK — GARDEN FOR CHILDREN

Small luncheon parties catered for by arrangement

Date	Opponents	Competition	Result	
2. 1.71	Dulwich Hamlet	I.L.	A	Abandoned
9. 1.71	Wealdstone	F.A.A.C.	H	1 0
11. 1.71	Slough Town	P.M.F.L.	A	2 1
16. 1.71	Tooting & Mitcham	I.L.	H	5 2
20. 1.71	Oxford City	P.M.F.L.	A	3 3
27. 1.71	Oxford City	I.L.	H	3 0
30. 1.71	Enfield	F.A.A.C.	H	2 1
6. 2.71	Didcot	B. & B.	A	5 2
(After Extra Time)				
9. 2.71	Woking	I.L.	A	2 0
13. 2.71	Oldbury United	F.A.A.C.	H	4 0
16. 2.71	Marlow	P.M.F.L.	A	8 1
20. 2.71	Wokingham Town	B. & B.	H	2 0
23. 2.71	Slough Town	P.M.F.L.	H	0 2
27. 2.71	Hitchin Town	I.L.	H	4 1
1. 3.71	Enfield	I.L.	A	1 1
3. 3.71	Hemel Hempstead	P.M.F.L.	A	4 2
6. 3.71	Dulwich Hamlet	I.L.	A	1 1
13. 3.71	Skelmersdale United	F.A.A.C.	H	0 3
16. 3.71	Hendon	I.L.	H	2 1
20. 3.71	Clapton	I.L.	H	5 1
23. 3.71	Maidenhead United	P.M.F.L.	H	1 0
25. 3.71	Corinthian Casuals	I.L.	A	4 0
27. 3.71	Barking	I.L.	A	3 2
29. 3.71	Woking	I.L.	H	2 0
31. 3.71	Wealdstone	P.M.F.L.	H	4 0
3. 4.71	Bromley	I.L.	H	2 0
6. 4.71	Hendon	I.L.	A	3 1
9. 4.71	Jersey F.A. XI	Friendly	A	3 0
10. 4.71	Jersey League XI	Friendly	A	5 1
12. 4.71	Guernsey F.A. XI	Friendly	A	0 2
15. 4.71	Chesham United	P.M.F.L.	A	1 2
17. 4.71	Sutton United	I.L.	A	1 0
22. 4.71	Oxford City	I.L.	A	1 1
28. 4.71	Slough Town			0 0
(After Extra Time)				
1. 5.71	Ilford	I.L.	H	1 3
7. 5.71	British Colleges	Friendly	H	3 1
10. 5.71	Slough Town	Replay		0 1
11. 5.71	Combined Services	Hosp. Cup	H	1 2
13. 5.71	Barking	P.M.F.L.	A	1 1

the gate

**NEWLANDS
HIGH WYCOMBE**

Tel: 28644

Pearl and Dave Neville invite you to their house, before (and after) the game, which is just a long throw-in from the ground. Pearl supplies the hot snacks and Dave the football talk (and some beer)

DESBOROUGH CYCLE WORKS

LTD.

BRIDGE STREET
HIGH WYCOMBE - BUCKS.

High Wycombe 32104

ARTHUR C. ABBOTT LIMITED

FOR ALL OFFICE EQUIPMENT

98/99 OXFORD ROAD, HIGH WYCOMBE.

Telephone : 21851/2

Date	Opponents	Competition		Result
18. 5.71	Barking	Replay	H	2 1
20. 5.71	Dusseldorf 99	Friendly	H	3 1
24. 5.71	Walton & Hersham	P.M.F.L.	H	0 1
29. 5.71	Gibraltar F.A. XI	Friendly	A	2 2
30. 5.71	Combined Services (Gib.)	Friendly	A	3 0

APPEARANCES — MAXIMUM POSSIBLE 81

K. Searle 76: B. Bremer 72: A. Horseman 66: E. Powell 64:
 J. Hutchinson 62: B. Baker 58: K. Blunt 58: L. Pritchard 58:
 J. Delaney 54: J. Maskell 50: G. Anthony 48: I. Rundle 48: P.
 Fuschillo 43: C. Gale 43: V. Faulkner 41: I. Maclean 33: K. O'Brien
 33: L. Hartridge 14.

GOAL SCORERS

A. Horseman 47: K. Searle 46: J. Hutchinson 28: B. Bremer 24:
 J. Delaney 22: L. Pritchard 18: G. Anthony 12: B. Baker 3: K.
 Blunt 3: V. Faulkner 1: P. Fuschillo 1: C. Gale 1: I. Maclean 1:
 E. Powell 1: I. Rundle 1.

LOAKES PARK TOP ATTENDANCES

	1969-70	1970-71
Skelmersdale United (F.A. Amateur Cup)		10,203
Oldbury United (F.A. Amateur Cup)		7,066
Slough Town (F.A. Challenge Cup)		6,662
Enfield (F.A. Amateur Cup)		6,144
Kettering Town (F.A. Challenge Cup)		4,518
Wealdstone (F.A. Amateur Cup)		4,345
Enfield (Isthmian League)	(2,527)	4,182
St. Albans City (Isthmian League)	(1,676)	3,136
Wealdstone (Isthmian League)	(1,690)	2,999
Sutton United (Isthmian League)	(2,580)	2,892
Leytonstone (Isthmian League)	(1,342)	2,858
Wokingham Town (Berks & Bucks Cup)		2,770
Wolverton Town (F.A. Challenge Cup)		2,304
Tooting & Mitcham United (Isthmian League) ...	(2,040)	2,215

CARDINAL PRINTING (LEEDS) LTD.

**SPECIALISTS IN MAGAZINE
AND
PROGRAMME PRINTING**



**FOR A SPEEDY AND EFFICIENT
SERVICE AT COMPETITIVE PRICES
CONTACT :**

Works:
HUNSLET MILLS, GOODMAN STREET,
LEEDS LS10 1NX.
Telephone: 701873

Head Office:
563 WATFORD WAY, LONDON NW7 4RT.
Telephone: 01-958 3819

ISTHMIAN FOOTBALL LEAGUE
FINAL TABLE — SEASON 1970-71
SENIOR SECTION

	P	W	D	L	F	A	Pts
Wycombe Wanderers	38	28	6	4	93	32	62
Sutton United	38	29	3	6	76	35	61
St. Albans City	38	23	10	5	87	26	56
Enfield	38	24	7	7	67	24	55
Ilford	38	21	7	10	74	51	49
Hendon	38	18	11	9	81	37	47
Barking	38	20	4	14	89	59	44
Leytonstone	38	17	10	11	68	50	44
Woking	38	18	6	14	57	50	42
Walthamstow Avenue	38	14	11	13	63	52	39
Oxford City	38	13	10	15	51	48	36
Hitchin Town	38	12	9	17	46	60	33
Wealdstone	38	12	8	18	45	64	32
Tooting & Mitcham United	38	11	9	18	44	66	31
Kingstonian	38	11	8	19	53	71	30
Bromley	38	10	6	22	34	77	26
Dulwich Hamlet	38	7	10	21	30	66	24
Maidstone United	38	7	6	25	42	84	20
Clapton	38	5	7	26	33	101	17
Corinthian-Casuals	38	2	8	28	23	103	12

STATION GARAGES

YOUR LOCAL



TRIUMPH

DISTRIBUTOR



ROVER

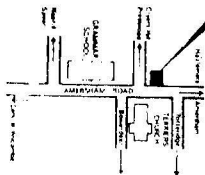
and LAND ROVER DEALER

Telephone : HIGH WYCOMBE 23832

SPARES AND SERVICE DEPARTMENT

Open 8.0 a.m. to 8.0 p.m. Monday to Friday

8.0 a.m. to 12 Noon Saturday



SALES DEPARTMENT

Open 9.0 a.m. to 8.0 p.m. Monday to Friday

9.0 a.m. to 5.0 p.m. Saturday

**125 AMERSHAM ROAD,
HIGH WYCOMBE**

Telephone : HIGH WYCOMBE 20972/35346

WYCOMBE COACHWORKS

Props. : J. and J. ING

**DASHWOOD WORKS, DASHWOOD AVENUE,
HIGH WYCOMBE, BUCKS.**

MOTOR BODY REPAIRS — CRASHWORK
INSURANCE WORK — SERVICING AND REPAIRS
RE - SPRAYS — ESTIMATES FREE

YOU'LL **SCORE** IF YOU BUY FROM OUR
COMPREHENSIVE SELECTION OF

**CAMERAS - BINOCULARS
RADIOS - HI-FI EQUIPMENT**

See **THAT Match** on a Colour T.V. from

HUGHES

7 HIGH STREET, HIGH WYCOMBE

Telephone 30138